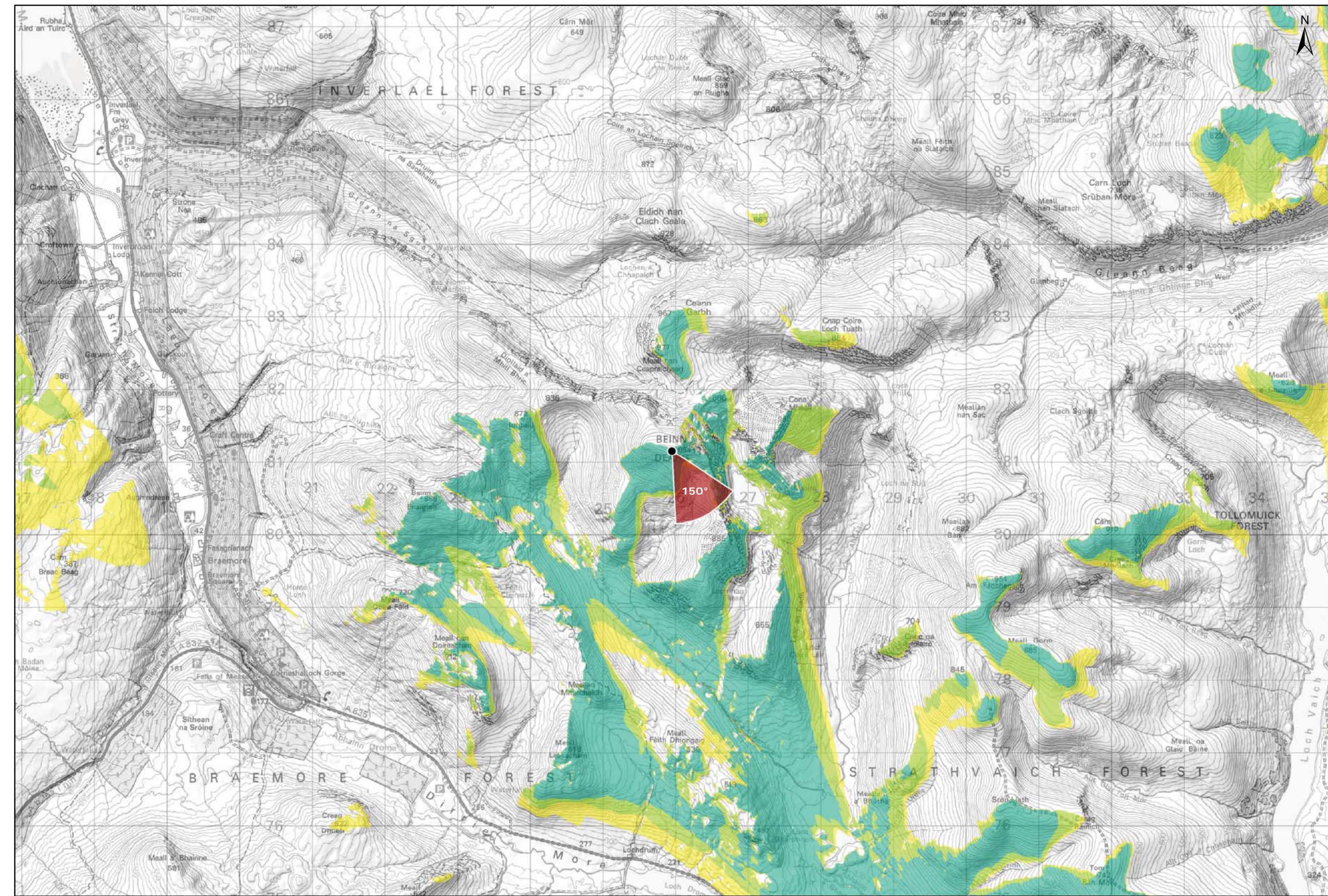


Viewpoint Location Plan Baseline Panorama
Scale: 1:150,000



Viewpoint Location Plan
Scale: 1:50,000 (Blade Tip ZTV)

Note:
1. ZTV: Created using ESRI ArcGIS 10.5 software using the following data and parameters:
Blade tip height: 133m
DTM Data: OS Terrain 5 DTM. Resampled to a 10m grid.
Observer height: 2m
No surface features, such as buildings or trees, were included in the analysis.
Earth curvature and light refraction has been included in calculations.

- Legend:**
- Proposed Turbines
 - Viewpoint Location
 - 90° Field of View Viewpoint
 - 53.5° Field of View Viewpoint

- Cumulative Wind Turbines
- Wind Farm Status (01/10/2018)**
- Wind Farm Status (01/10/2018)
 - Wind Farm Status (01/10/2018)

- Wind Farm Status (01/10/2018)**
- Operational; Under Construction
- Zone of Theoretical Visibility**
- No. of Turbines (133m) Visible
- 1 - 3
 - 4 - 6
 - 7 - 9

Blade Tip:	133m
DTM:	OS T5
DTM resolution:	5m
Observer height:	2m
Surface features:	Excluded
Earth curvature:	Included

Title: Figure 9.32a
Viewpoint 12: Beinn Dearg

Lochluichart Wind Farm
Extension II

Source:
© Crown copyright and database rights (2016)
OS (license No 0100031673)

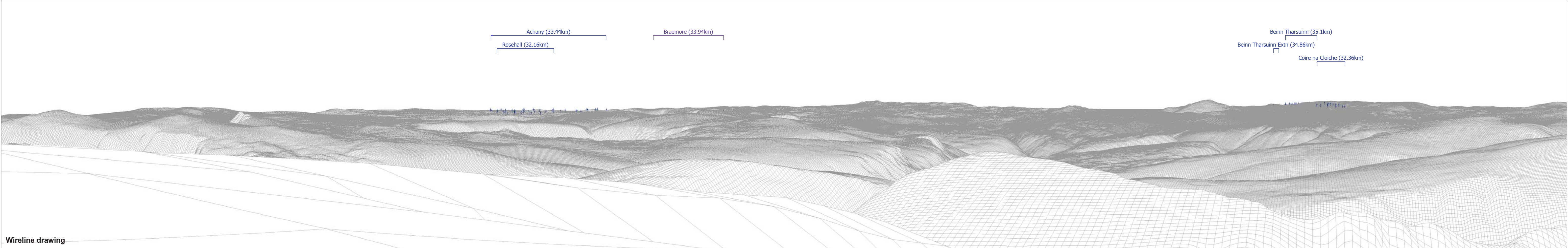
Client: Infinergy

Drawn by: MJF **Checked:** JW

Date: 15/10/2018 **Figure:** 9.32a

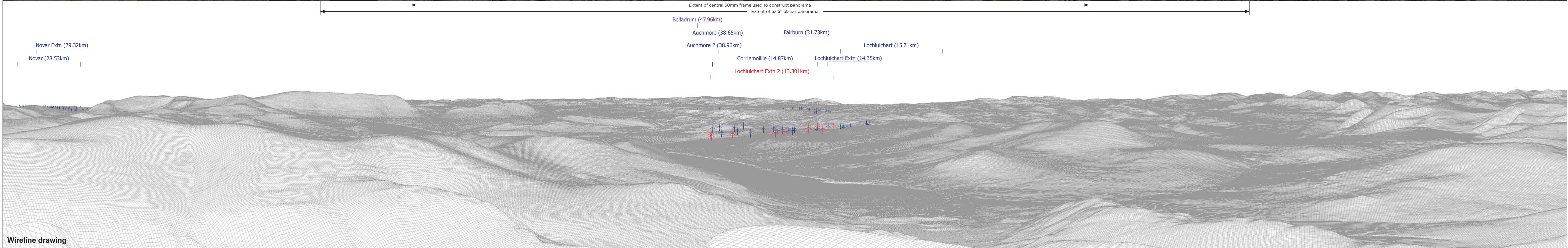
Scale: **Revision No.:** B





OS reference: 225952 E 881158 N	Horizontal field of view: 90° (cylindrical projection)	Camera: Canon EOS 5D Mark II
Eye level: 1082.95 m AOD	Principal distance: 522 mm	Lens: 50mm (Canon EF 50mm f/1.4)
Direction of view: 60°		Camera height: 1.5 m AGL
Nearest turbine: 13.296 km		Date and time: 26/05/18 13:21

Figure: 9.32b
Viewpoint 12: Beinn Dearg



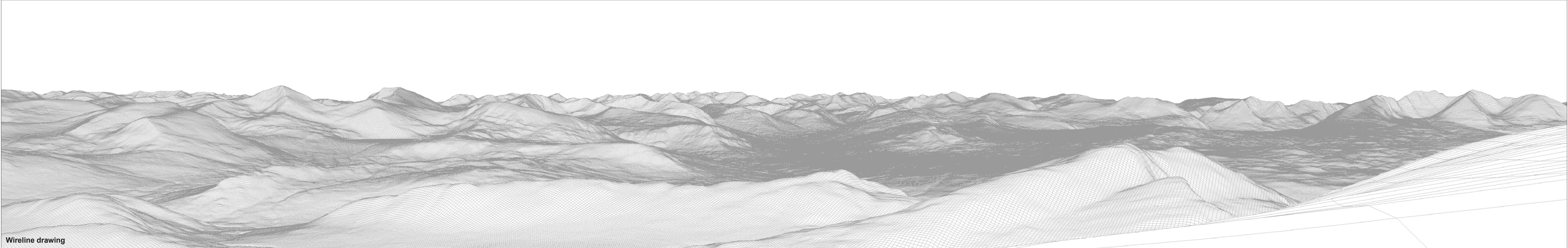
OS reference:	225952 E 881158 N	Horizontal field of view:	90° (cylindrical projection)	Camera:	Canon EOS 5D Mark II
Eye level:	1082.95 m AOD	Principal distance	522 mm	Lens:	50mm (Canon EF 50mm f/1.4)
Direction of view:	150°			Camera height:	1.5 m AGL
Nearest turbine:	13.296 km			Date and time:	26/05/18 13:21

Figure 9.32c
Viewpoint 12: Beinn Dearg



Baseline photograph

This image provides landscape and visual context only



Wireline drawing

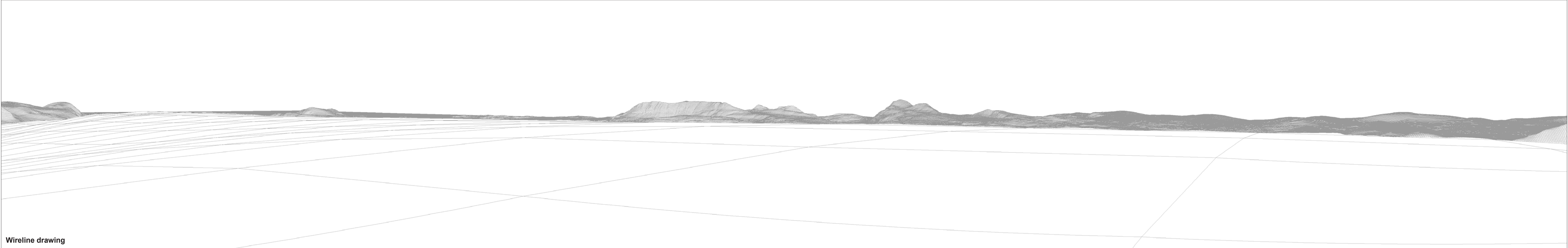
OS reference: 225952 E 881158 N	Horizontal field of view: 90° (cylindrical projection)	Camera: Canon EOS 5D Mark II
Eye level: 1082.95 m AOD	Principal distance: 522 mm	Lens: 50mm (Canon EF 50mm f/1.4)
Direction of view: 240°		Camera height: 1.5 m AGL
Nearest turbine: 13.296 km		Date and time: 26/05/18 13:21

Figure: 9.32d
Viewpoint 12: Beinn Dearg



Baseline photograph

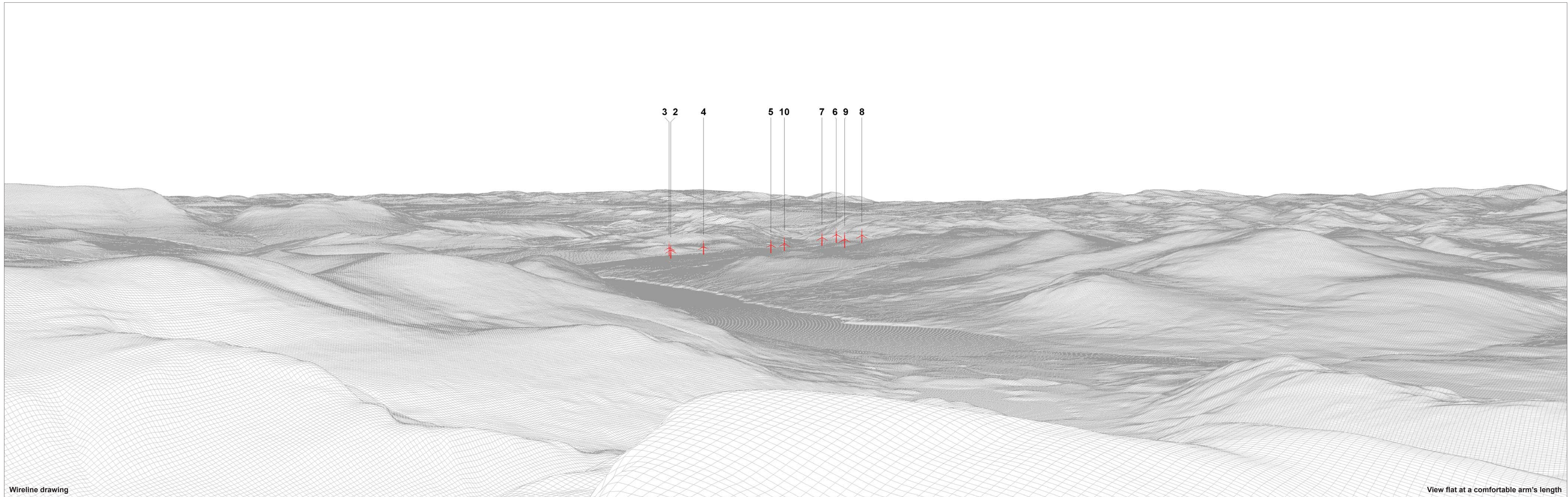
This image provides landscape and visual context only



Wireline drawing

OS reference: 225952 E 881158 N	Horizontal field of view: 90° (cylindrical projection)	Camera: Canon EOS 5D Mark II	
Eye level: 1082.95 m AOD	Principal distance: 522 mm	Lens: 50mm (Canon EF 50mm f/1.4)	
Direction of view: 330°		Camera height: 1.5 m AGL	
Nearest turbine: 13.296 km		Date and time: 26/05/18 13:21	

Figure: 9.32e
Viewpoint 12: Beinn Dearg



Wireline drawing

View flat at a comfortable arm's length

OS reference: 225952 E 881158 N
 Eye level: 1082.95 m AOD
 Direction of view: 150°
 Nearest turbine: 13.296 km

Horizontal field of view: 53.5° (planar projection)
 Principal distance: 812.5 mm
 Paper size: 841 x 297 mm (half A1)
 Correct printed image size: 820 x 260 mm

Camera: Canon EOS 5D Mark II
 Lens: 50mm (Canon EF 50mm f/1.4)
 Camera height: 1.5 m AGL
 Date and time: 26/05/18 13:21

Figure: 9.32f
 Viewpoint 12: Beinn Dearg



Photomontage (operational turbines have been montaged in this view)

View flat at a comfortable arm's length

OS reference:	225952 E 881158 N	Horizontal field of view:	53.5° (planar projection)	Camera:	Canon EOS 5D Mark II
Eye level:	1082.95 m AOD	Principal distance	812.5 mm	Lens:	50mm (Canon EF 50mm f/1.4)
Direction of view:	150°	Paper size:	841 x 297 mm (half A1)	Camera height:	1.5 m AGL
Nearest turbine:	13.296 km	Correct printed image size:	820 x 260 mm	Date and time:	26/05/18 13:21

Figure: 9.32g
Viewpoint 12: Beinn Dearg